



◀ LENSES

## FE 100mm F2.8 STF GM OSS

SEL100F28GM

★★★★★ [Write a review](#)

♥ Favorite    ➦ Share

Where To Buy

**\$1,499.99<sup>1</sup>**

Overview

Specifications and Features

Reviews

Related Products

Support





G Master info at the link

[G Master concept](#)

# STF™ delivers incomparable bokeh and sharpness

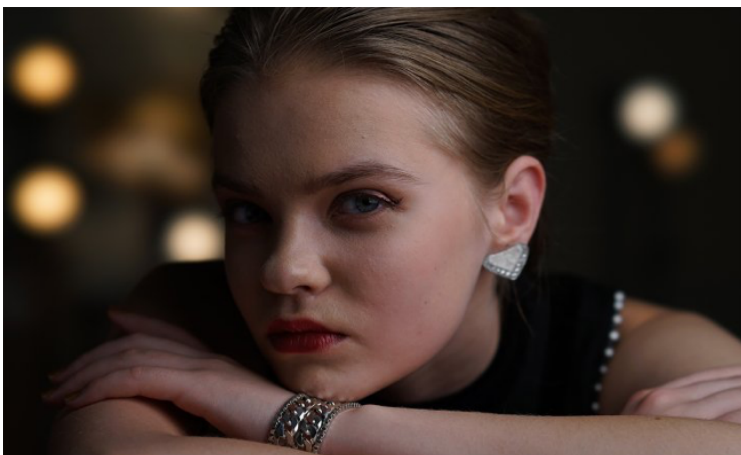
This 100 mm mid-range telephoto prime lens is a superb creative tool that offers outstanding G Master resolution plus innovative STF (Smooth Trans Focus) optics for magnificent bokeh. It features fast, precise, quiet DDSSM autofocus, and close-up capability up to 0.25x magnification.

Built-in Optical SteadyShot image stabilization minimizes blur that can occur during low light or macro shooting.<sup>2</sup>



## Exemplary G Master resolution and bokeh

Advanced optics and design achieve extreme resolution and absolutely breathtaking bokeh that combine for overall performance that epitomizes the G Master concept.



## Bokeh doesn't get better than this

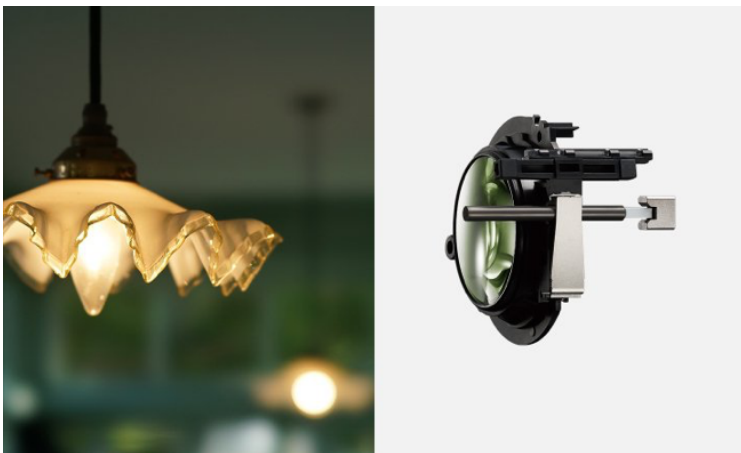
This lens has been specifically designed

to produce  
extraordinarily  
smooth, natural bokeh  
without vignetting.  
The result is naturally  
immersive depth and  
dimensionality.



## Resolution true to the G Master name

Extreme image-wide  
resolution and  
sharpness fulfill the  
demanding 50 lines  
per millimeter MTF  
requirement that is the  
basis of G Master  
optical design.



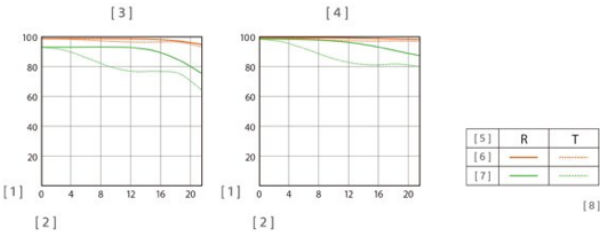
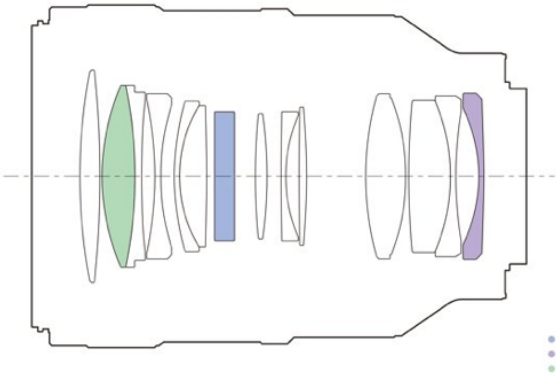
AF that  
lets you  
concentrate  
on  
creating

DDSSM (Direct Drive SSM) focus drive provides fast, precise, quiet autofocus, allowing the user to concentrate fully on capturing superlative stills or movies.

More details

# Lens expert tips

Play video



## Lens Configuration

G Master series lenses take imaging and expression to previously unattainable levels with a stunning blend of extremely high resolution and softly dissolving background bokeh.

[1] APD [2] Aspherical lens [3] ED glass

## MTF Chart

MTF (Modulation Transfer Function) describes how well a lens can reproduce fine details, measured as the degree of contrast achieved between finely spaced lines.

[1] Contrast (%) [2] Distance from optical center of lens (mm) [3] Max. aperture [4] F8 aperture [5] Spatial frequency [6] 10 line pairs / mm [7] 30 line pairs / mm [8] R: Radial values T: Tangential values

# Lens Controls



1. Focusing ring / 2. Aperture ring / 3. Macro switching index / 4. Macro switching scale / 5. Focus hold button (customizable) / 6. Aperture click switch / 7. Shake compensation switch / 8. Focus mode switch / 9. Macro switching ring / 10. Macro switching unlock button / 11. Mounting index / 12. Aperture<sup>3</sup> scale / 13. Lens contacts / 14. Lens mount rubber ring / 15. Aperture index / 16. Lens hood index

# FE 100mm F2.8 STF GM OSS compatibility

Follow the link below for lens/body compatibility  
details.

[Go to Support Page](#)

# SPECIFICATIONS AND FEATURES

Premium G Master series Mid-range telephoto prime	<b>MINIMUM FOCUS DISTANCE</b> 2.79 ft/0.85 m (at "0.85 m-∞" position); 1.87 ft/0.57 m (at "0.57 m-1.0 m" position)
Optical apodization (APD) element for magnificent bokeh	<b>MAXIMUM MAGNIFICATION RATIO (X)</b> 0.14 (at "0.85 m-∞" position); 0.25 (at "0.57 m-1.0 m" position)
Nano AR coating for outstanding clarity	<b>FILTER DIAMETER (MM)</b> 72
Direct Drive SSM (DDSSM) for quiet, highly precise focus lens control	<b>WEIGHT</b> 24.7 oz (700 g)
Dust- and moisture-resistant design <sup>4</sup>	



Full Specifications

Features



Sony is committed not only to offering products, services and content that deliver exciting experiences but also to working towards our goal of a zero environmental footprint throughout our business activities. [Learn More About Sony And The Environment](#)



# Help us improve this page

Share your feedback ▼

## REVIEWS

---

USERS SAY



0 reviews

Currently there are no reviews.

[Write a review](#)

# RELATED PRODUCTS

[See all accessories >](#)



α7R III 35 mm  
full-frame  
camera with  
autofocus  
~~\$3,199.99~~<sup>1</sup>  
\$2,799.99



α7R II with  
back-  
illuminated  
full-frame  
image sensor  
~~\$2,899.99~~<sup>1</sup>  
\$2,699.99  
II CE-7RM2



α7S II E-mount  
Camera with  
Full-Frame  
Sensor  
~~\$2,699.99~~<sup>1</sup>  
\$2,699.99



α7 II E-mount  
Camera with  
Full Frame  
Sensor  
~~\$1,699.99~~<sup>1</sup>  
\$1,599.99  
BODY /  
KIT  
at \$1,599.99<sup>1</sup>



α7R E-mount  
Camera with  
Full-Frame  
Sensor  
~~\$1,899.99~~<sup>1</sup>  
\$1,899.99



α7S E-mount  
Camera with  
Full-Frame  
Sensor  
~~\$1,999.99~~<sup>1</sup>  
\$1,999.99

Accessories compatibility

Lenses compatibility

# PRODUCT SUPPORT

- [Support](#)  
[Drivers and Software](#)  
[Manuals and Warranty](#)
- [Email Newsletter Sign Up](#)  
[Product Registration](#)

# RECENTLY VIEWED ITEMS



**α7R II with  
back-  
illuminated**



**X900E 4K HDR  
TV with X-  
tended**

Footnotes ▾

## Where To Buy

See Authorized  
Retailers

## Sony Rewards

Join Now  
Learn More  
Manage Account

## News & Info

Press Releases  
About Sony  
Product Support  
Product Manuals  
Product Registration  
Newsletter sign up  
Accessibility and  
Usability

## Other Sites

PlayStation  
Sony Pictures  
Sony Music  
Sony Mobile  
Crackle  
Sony Square NYC

United States

For Professionals   Careers   Contact Us   Company Info  
Voluntary Recall



© 2017 SONY CORPORATION OF AMERICA

TERMS AND CONDITIONS   PRIVACY POLICY/YOUR CALIFORNIA PRIVACY RIGHTS